

# Sizewell C update 2023

## Benhall Parish Council

Michelle Emmerson-Grey- Community Relations Manager

Zoe Botten – Community Relations Manager

Wednesday 26th July 2023

# Agenda

- Meet the READ Team
- Deed of Obligation
- Community Pledges
- Timelines
- Project Update
- Project Tracker

**SIZEWELL C IS A PROPOSED  
NEW NUCLEAR POWER STATION**  
THAT WILL BE BUILT ON THE SUFFOLK COAST

IT WILL  
SUPPLY  
POWER TO **6** MILLION HOMES  
AND GENERATE  
ELECTRICITY FOR 60 YEARS



**SIZEWELL C WILL PROVIDE**  
LOCAL JOBS, TRAINING AND EDUCATION BENEFITS

**SIZEWELL C  
WILL SAVE  
9** MILLION  
TONNES OF CO<sub>2</sub>  
EMISSIONS EVERY  
YEAR OF OPERATION

**SIZEWELL C  
WILL TAKE  
9-12 YEARS TO BUILD**  
**SUPPORT  
900** PERMANENT JOBS



## Community Relations Team



**Paul Lennon – Michelle Emmerson Grey**  
Senior Community Relations Manager for Residents and Land. Paul's team is responsible for engaging with residents and landowners regarding the project, addressing enquiries and/or any concerns they have.

**Richard Knight – Zoe Botten**  
Senior Community Relations Manager for community governance and will engage with Parish Councils and local authorities regarding project updates and the future governance of the Deed of Obligation.

# Effective Relationships



Accountability



Honesty



Listening



Open  
Communication



Trust



Mutual Respect

## Deed of Obligation

Resourcing of local  
authorities

Accommodation  
and Housing

Emergency  
Services

Health and  
Wellbeing

Public Services and  
Community Safety

Natural  
Environment

Employment and  
skills

Tourism

Noise

Heritage

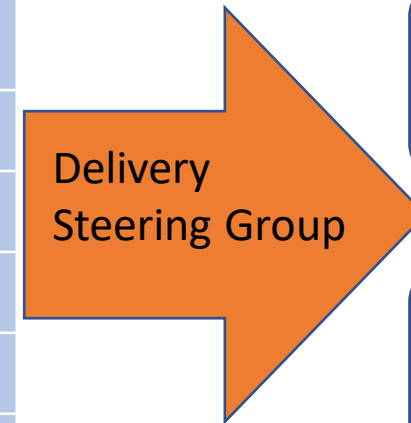
Transport

Community Fund

Leisure and  
Amenity

# Working Groups

Communications	Planning Group
Water Management Working Group	Environment Review Group
Marine Technical Forum	Environment Review Group
Natural Environment Awards Panel	Environment Review Group
Ecology Working Group	Environment Review Group
Rights of Way Working Group	Environment Review Group Transport Review Group
Local Traffic and Transport Working Groups	Transport Review Group
Parish Councils	Transport Review Group
Community Safety Working Group	Social Review Group
Health and Wellbeing Working Group	Social Review Group
Accommodation Working Group	Social Review Group
Tourism Working Group	Economic Review Group
Supply Chain Working Group	Economic Review Group
Employment, Skills & Education Working Group	Economic Review Group



Community  
Forum (Annual)

Main  
Development Site  
Forum

Northern  
Transport Forum

Southern  
Transport Forum



# Community Pledges

Minimize disruption to local communities during the construction of Sizewell C

Invest in local employment, education and skills. This includes an aim to enable 1,500 apprenticeships.

Support the growth of the local economy. This includes measures to support local firms in gaining work on the project.

Transport the majority of construction materials by rail and sea, significantly reducing the number of Sizewell C HGVs on local roads.

Respect the Suffolk Heritage Coast and minimise impact on RSPB Minsmere, National Trust Dunwich Heath and Leiston Abbey.

Return the temporary construction area to a standard befitting the Area of Outstanding Natural Beauty (AONB) following construction.

Remove the accommodation campus and caravan site, the park and ride sites, the rail extension of the Saxmundham to Leiston branch line and freight management facility following construction and restore the land.

Support the Suffolk coast tourism sector to offset impacts from construction through the provision of a Tourism Fund.

Provide a comprehensive 24/7 onsite occupational health service for workers, a healthcare contribution and a Public Services Contingency Fund.

Require all workers to sign a Worker Code of Conduct and enforce it – as we have done successfully at Hinkley Point C.

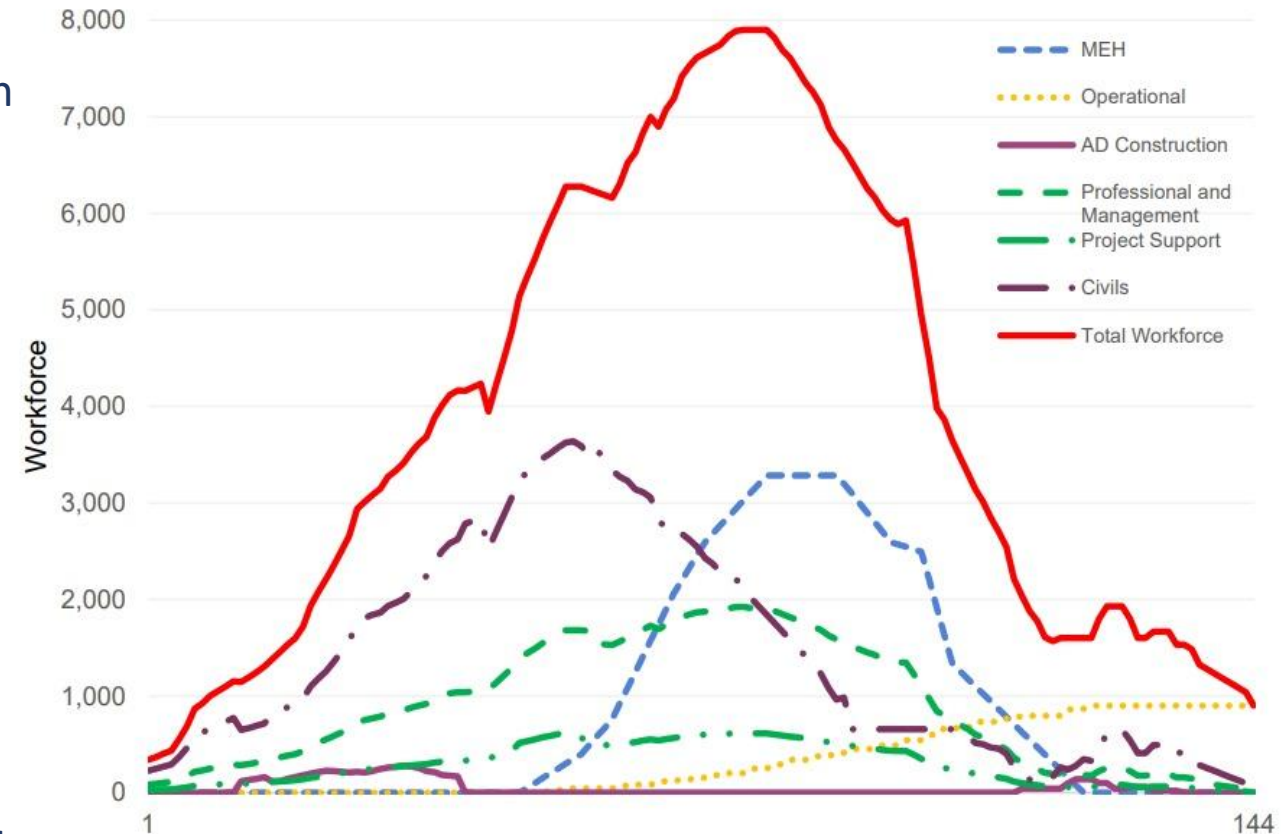
Enhance the economic, social and environmental wellbeing of local communities through the provision of a Community Fund.

The Sizewell C Project will not impact on the supply of water to local residents by a single drop. We have a sustainable strategy to provide potable water throughout construction and the operation of the new power station.'

# Accommodation and Housing

- 2400 bed accommodation campus, with a further 400 pitch caravan park available as temporary accommodation at peak
- Housing Fund to increase the supply of bedspaces in the private rented and tourism sectors
- East Suffolk Council to prepare housing plan for approval by the Accommodation Working Group
- Contingency funding if SZC-provided accommodation delayed
- Fund based on a worst-case scenario
- A third of the workforce will come from the local area with an aim to exceed this figure.

Plate 1.1: Sizewell C workforce profile





# Occupational Health Services

- 24/7 on-site occupational health service
- Services will include a drop-in nurse-led treatment service, commonly-prescribed medication, GPs
- Available to home-based workers as well as those living in Sizewell C-provided accommodation
- Drug and alcohol testing
- Further services incorporated as workforce grows
- Additional funding to support local health services



# Emergency Services and Community Support

- Funding for emergency services in East Suffolk. Locality Sgt in post and working closely with the Community Relations Team
- Police reserve funding
- Community Safety Officer will work with local stakeholders to address concerns
- Resources devoted to council-led initiatives that reduce crime and anti-social behaviour
- Pressures on education and social care addressed through a resilience fund
- Construction workforce will sign a Worker Code of Conduct



# Workforce Conduct

The conduct of the SZC workforce in the community is of the highest importance. It is for that reason that everyone involved with the SZC Project is expected to:

- Be responsible for your safety and the safety of others by complying with all applicable laws, rules, and regulations;
- Be ambassadors for the project through your behaviour and actions on site and in the community, including in the use of social media
- Refrain from anti-social behaviour, discriminatory behaviour or harassment on and off site
- Ensure that they are not intoxicated by alcohol or under the influence or illegal drugs
- Respect colleagues and endeavour to maintain harmonious workplace relations at all times
- Ensure that rented accommodation is maintained in a tidy state with the proper disposal of rubbish
- Ensure that personal noise levels are appropriate to the time of day and location
- Ensure no damage of any kind is caused to property on the off site
- Respect speed limits and be aware of other road users, agricultural vehicles and livestock

**‘By attending and completing the SZC Site Induction and receiving access to SZC site you are confirming your commitment to the expectations described above’.**

# Community Fund

- £23mn for projects that promote the economic, social or environmental wellbeing of East Suffolk to filter through the lifetime of the project
- Administered by Suffolk Community Foundation; public representatives on the funding panel
- Further support from Community Action Suffolk and East Suffolk Community Partnerships
- Focused where impacts are greatest
- Small grants, Open grants, Strategic grants covering different purposes





# Background

- Sizewell C will deliver 19% Biodiversity Net Gain (BNG)
- Benhall scheme to create fen meadow and wet woodland
- One of x3 new 'off-site' nature reserves to help compensate for unavoidable loss of these habitats from Sizewell Marshes SSSI
- Requirements 25 & 26 of the DCO required detailed fen meadow/wet woodland plans to be agreed by East Suffolk Council (ESC) in consultation with Natural England
  - Requirement 25 (Fen Meadow) – DC/22/4865/DRR – Discharged approved by ESC 1 February 2023
  - Requirement 26 (Wet Woodland) – DC/22/4863/DRR – Discharge approved by ESC 25 January 2023
- Benhall will be delivered in 2023. The other two sites are scheduled for 2024 (Halesworth) and 2026 (Pakenham)
- Additional to Wild Aldhurst created in 2014
- 150ha new 'Sandlings' habitat already created at Sizewell



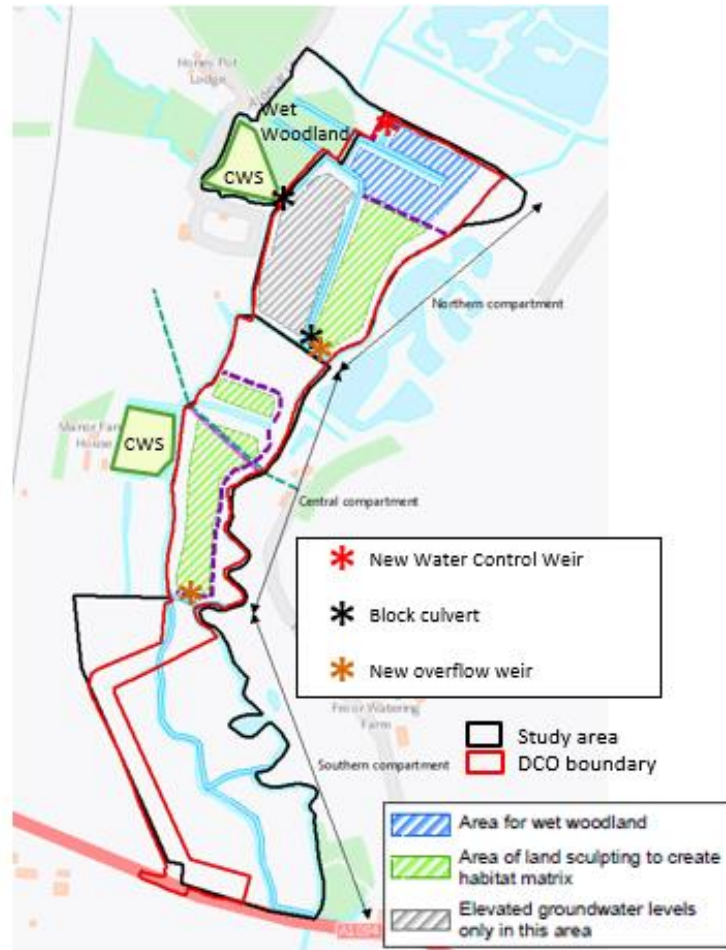
## The Sizewell C Project

Fen Meadow Plan: Benhall (Work No. 7)  
Discharge of DCO Requirement 25

Revision: 2.0  
The Sizewell C (Nuclear Generating Station) Order 2022  
DCO Requirement: Requirement 25: Main Development Site Fen Meadow

January 2023

# Design - Layout



## ■ Northern Compartment

- Isolate ditch network from 'The Canal' by blocking two existing culverts.
- New weir at northern end to control/raise ditch water levels and support water table.
- Block buried field drains to provide higher and more stable water table
- Shallow sculpting to lower ground surface and create microtopography
- Install overflow weir to south to drain flood water

## ■ Central Compartment

- Block buried field drains to provide higher and more stable water table
- Shallow sculpting to lower ground surface and create microtopography
- Install overflow weir to south to drain flood water
- Temporary PRow diversion during works followed by reinstatement along existing alignment



# Site Access & Transport

- Access has been designed in consultation with SCC/ESC.
- SZC Co. has installed temporary track matting at Benhall access and temporary warning signs on A1094 to facilitate safe access during site investigation works.
- Access to be upgraded via S278 agreement with SCC to provide tarmacked bellmouth.
- In order for trees along the frontage of A1094 to be retained, bellmouth width only allows single way working.
- Temporary traffic signals installed on A1094 during construction phase of Benhall. Removed during school holiday.
- Peak of 82 two-way HGVs per day (41 each way) when spoil is being removed from site and taken to SZC main site. Details set out in CTMP included in detailed plan



# Sizewell Link Road

SLR is 6.8 km in length running from the A12 south of Yoxford to close to the main site entrance

The SLR includes a roundabout joining the A12, a single span railway bridge, a link from the SLR to the B1122 called the 'Middleton Moor Link'

Potential to re-purpose the existing B1122 to be more cycling friendly with links into newly designated 'Quiet Lanes'





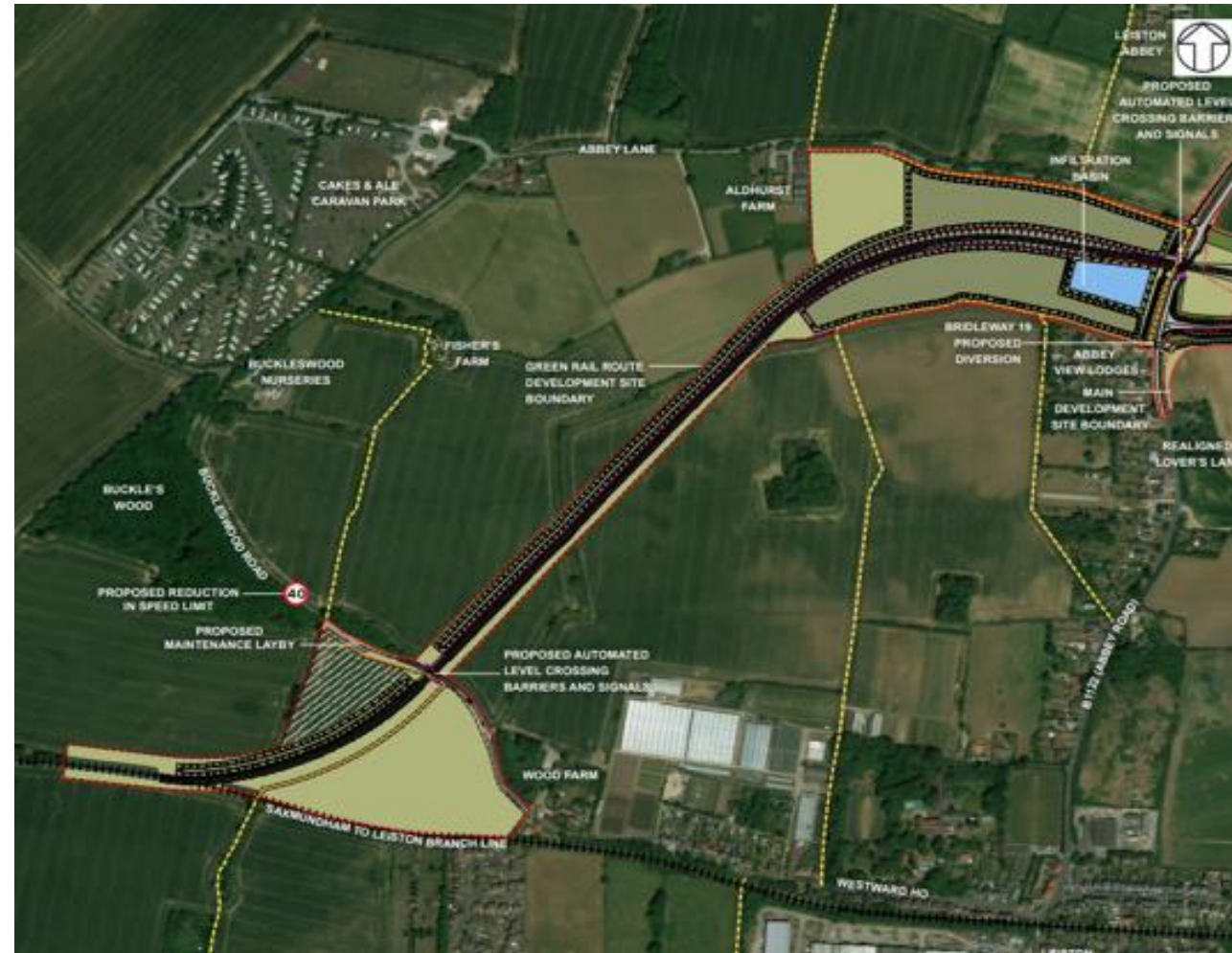
## (ACA) Ancillary Construction Area

- Once constructed and operational the site will include the following areas:
- C12 – Stockpile area
- C13 – Caravan Site to accommodate workers – 400 Caravans.
- C14 – Contractor’s area which will be used for laydown/stockpile area, freight management, vehicular parking and maintenance, temporary building and facilities.
- C15 – Rail infrastructure, park and ride, logistics compound.
- Blue dotted line is where the railway line will be, and the red dotted line is where we will build a road on the site.



# Green Rail Route

4.5km rail link from the Leiston branch line direct to the construction site



# Noise Mitigation Scheme

- During the Early Years, the Green Rail Route will be constructed, and trains will travel to the Land East of Eastlands Industrial Estate (daytime only) (known as Big Field)
- When the Green Rail Route is completed, trains will travel to site (night-time only)
- Sound modelling and assessments have been completed and approved by SCC
- Eligible property owners will be notified with a hand-delivered information pack
- The scheme is being rolled out in areas of 50 properties, in order of the construction phases
- The scheme is time-sensitive to ensure that secondary glazing and/or ventilation is in place before works commence

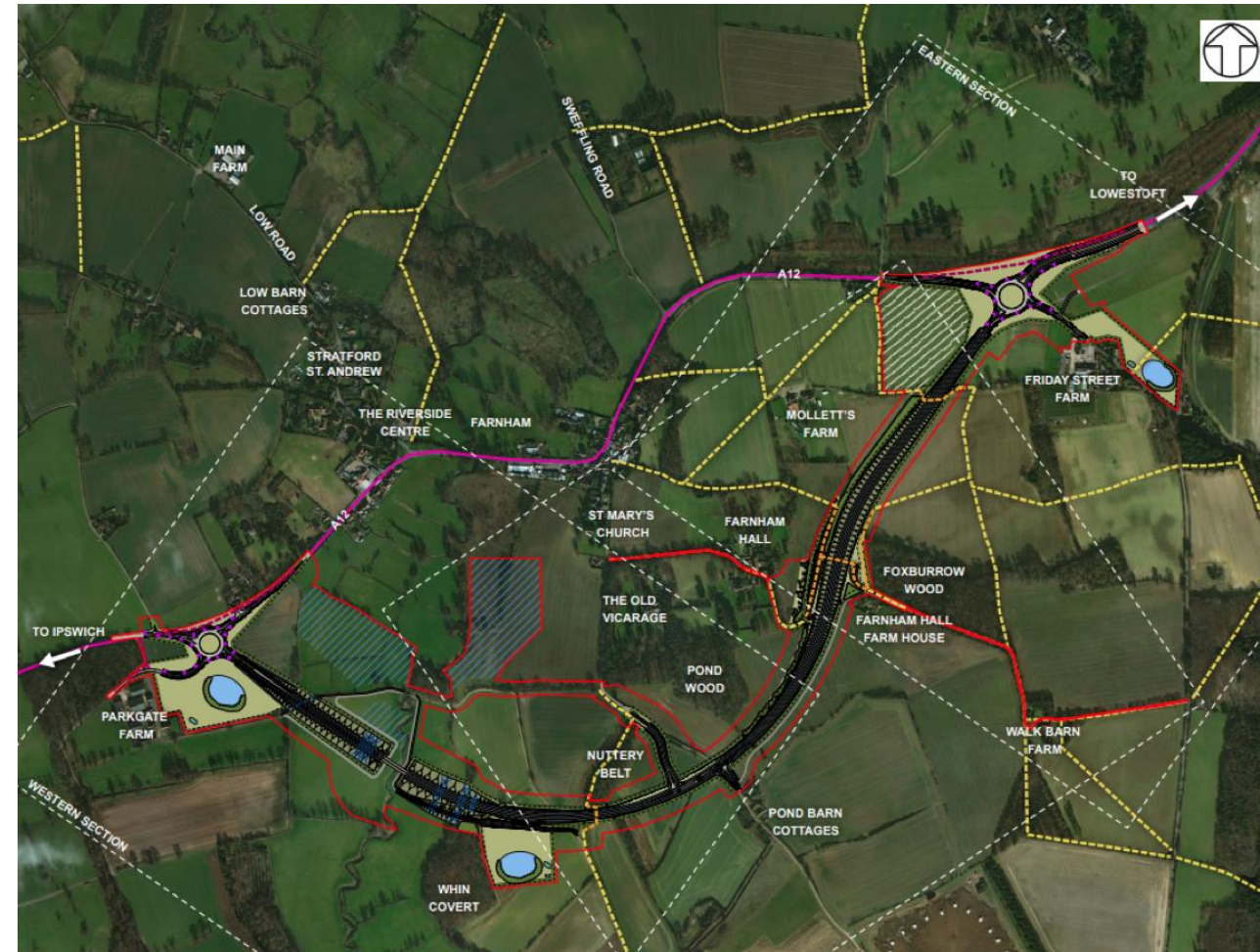


# Two Village Bypass

Bypass of Farnham and Stratford St Andrew

2.4km in length

New 4 arm roundabout at Parkgate Fm and new 4 arm roundabout at Friday Street





# Southern Park and Ride

Located at Wickham Market  
1250 car parking spaces  
Postal Consolidation Centre  
Traffic Incident Management Area



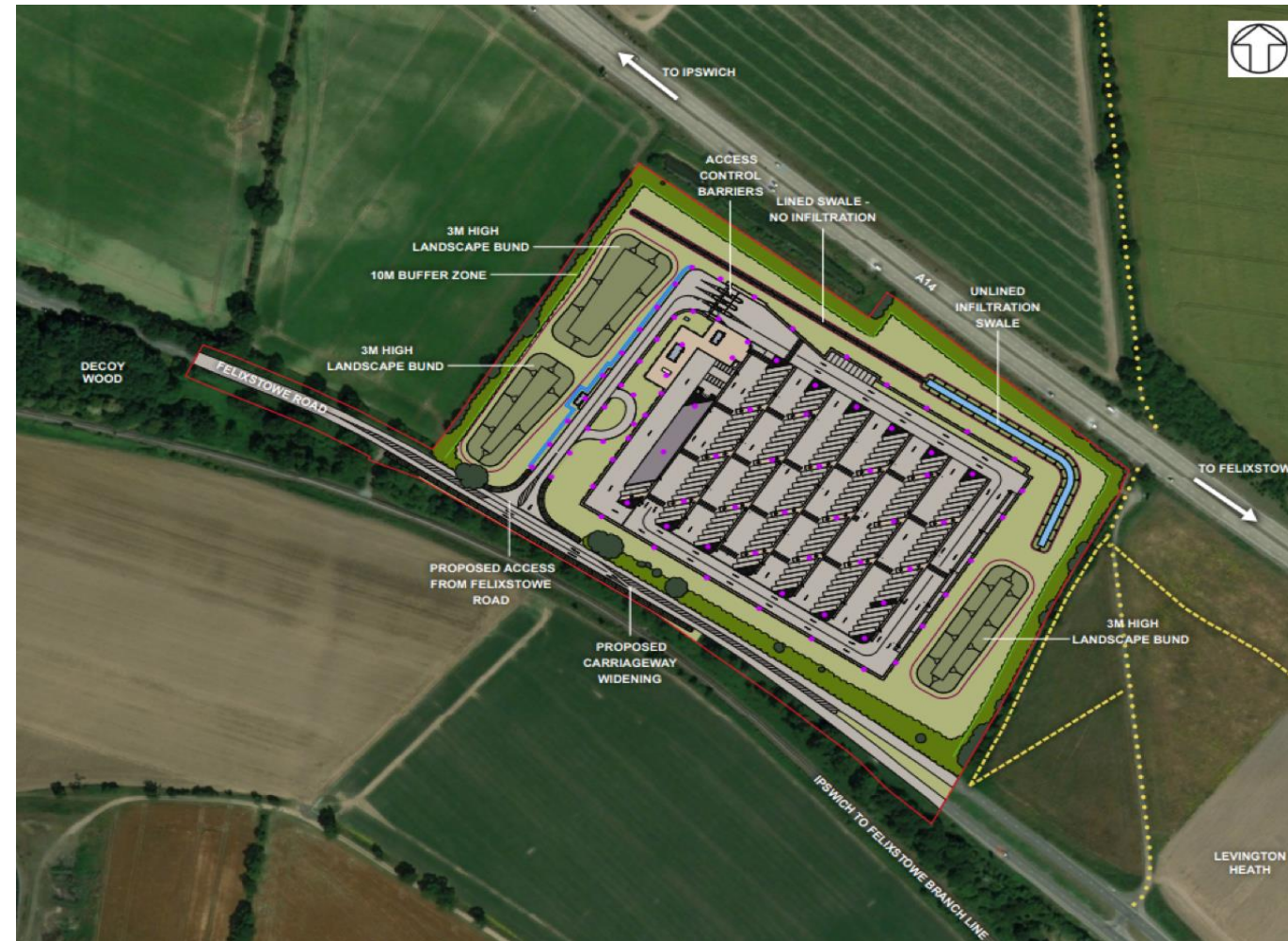
# Freight Management Facility

A12 / A14 junction

Parking for 150 HGVs

Security and inspection of HGVs

Amenity and welfare building

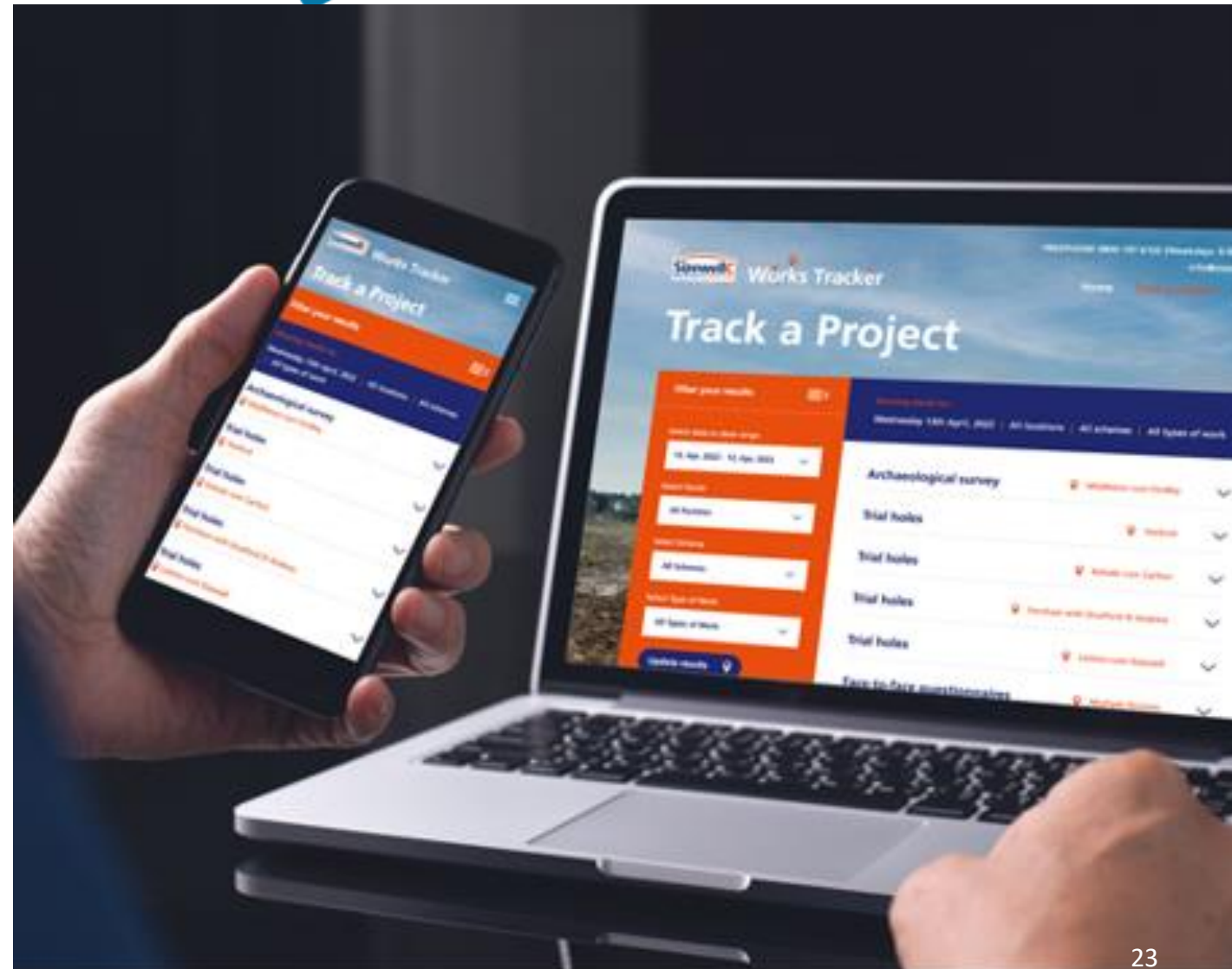




# Project updates

New online works tracker to keep local communities informed about surveys and other preparatory works

Contact our Leiston office –  
[info@sizewellc.co.uk](mailto:info@sizewellc.co.uk) or 0800 197 6102



Thank you

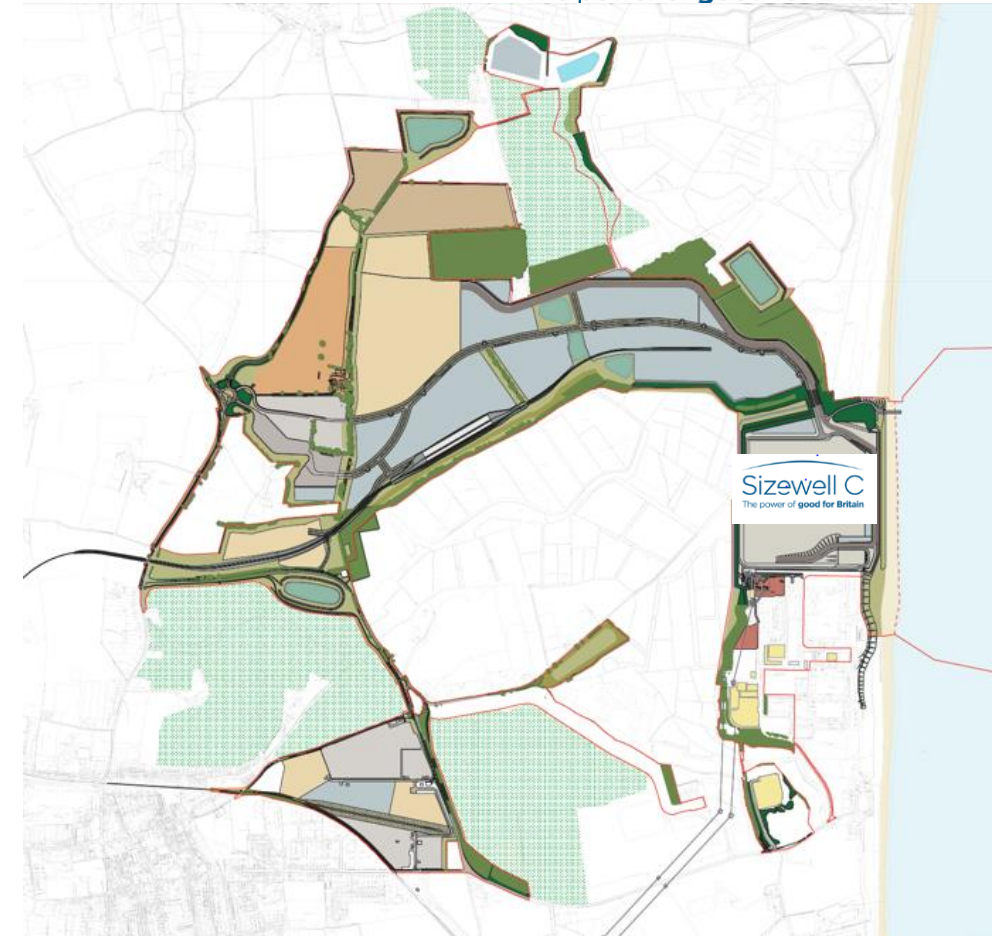
# Construction...

Sizewell C will take 10-12 years to build

We are aiming to start in 2023, with peak likely around 2028, with advanced works being carried out currently.

Land to the north and west of the platform will be used during construction

Other associated developments will help us deliver freight and people to the site as sustainably as possible



# Why?

The UK is committed to meeting Net Zero by 2050.

Nuclear power reduces our reliance on imports.

Nuclear energy in the mix lowers costs for consumers.

We need more capacity to meet rising demand.

Nuclear has a very small land footprint.

